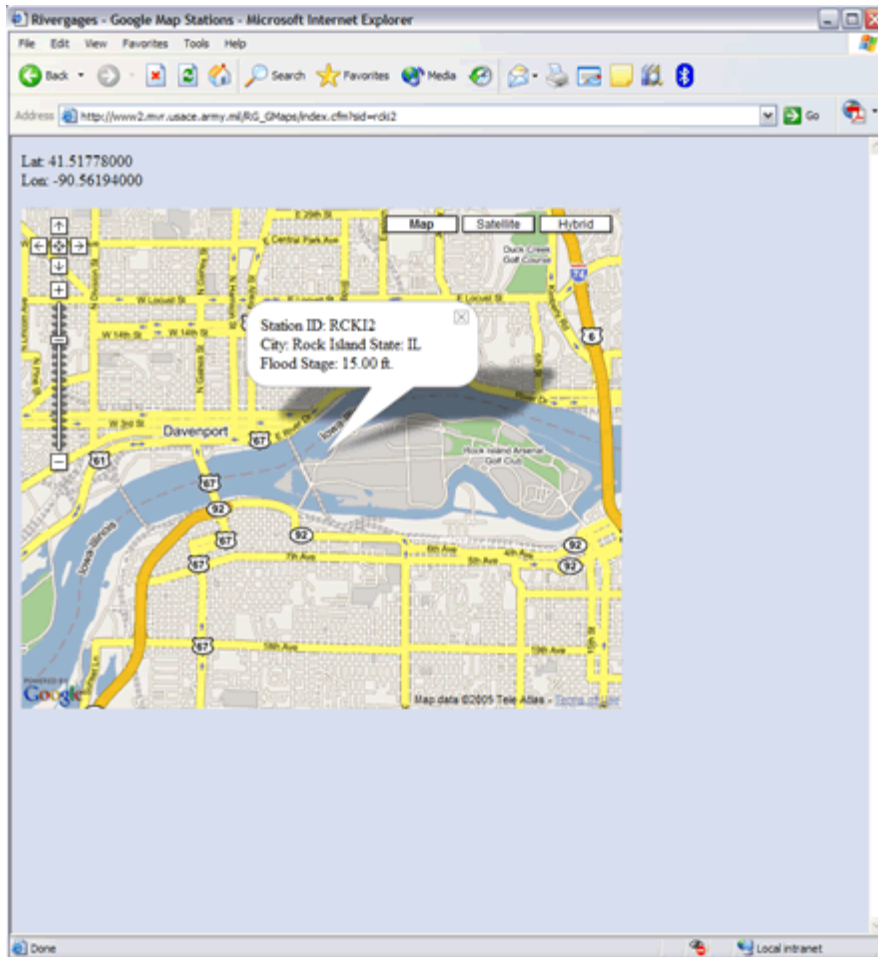


## Google™ Earth and Google™ Map

Two new options are now available for viewing the Rivergages.com data.

(Option 1) The “Google Map” button makes Rivergages.com compatible with the Google™ Map features. It is meant to be useful for users who just desire a quick link to a map based image of a gage along with basic information. No downloads are required and it is suitable for users on low speed internet connections. Map, satellite, and hybrid views are available. Sample screen shot follows.



(Option 2) The “Google Earth” button makes RiverGages.com compatible with the Google™ Earth Geographical Information System (GIS) user interface. It is meant to be useful for users who desire more detailed information along with providing the capability to turn on and off various GIS layers. The required installation package can be downloaded from Google™ at <http://www.google.com/earth/download/ge/>.

This software MUST be downloaded before the “Google Earth” button can be utilized. Please make note of the system requirements. Some users may also experience firewall or other related problems.

Once you have downloaded and installed Google™ Earth on your local computer, you will be able to view gage location icons layered on top of streaming high resolution satellite photography directly from the Google™ Earth interface.

By clicking on the Dynamic Map button, Google™ Earth will be launched and the location of each gage will be displayed with a clickable icon. Upon clicking a location icon, a dialog box will display current gage information. A screen shot is shown below.

Note: There are some stations that do not yet have a latitude/longitude defined that will not show up correctly under either option. We are working on defining these.

